

mint LesionTM

ONCOLOGICAL THERAPY ASSESSMENT AT THE SLK CLINICS HEILBRONN: EFFICIENT, STRUCTURED REPORTS IN DAILY ROUTINE

As a clinic group with almost 1500 beds, the SLK Clinics Heilbronn are the largest healthcare provider in the Heilbronn-Franconia region. The clinic for "Diagnostic Radiology, Minimally Invasive Therapies and Nuclear Medicine" plays a central role and covers the entire spectrum of radiology, including neurological and pediatric radiology as well as nuclear medicine. The local "Tumor Center Heilbronn - Franconia" refers a large number of oncological patients. In the future, structured reporting with mint LesionTM will facilitate an efficient evaluation of oncological therapies in daily routine for these patients.

Due to new, targeted therapies, not only is the number of patients constantly rising but also the complexity of the therapies. These often cost-intensive therapies also require precise, objective reports by the radiologist which can be understood clearly by referring physicians.

SUCCESS STORY



*mint LesionTM helps minimize
time-consuming or redundant
workflows and simplify complex
activities.*



Prof. Dr. Philippe Pereira

Director

Clinic for Diagnostic Radiology,
Minimally Invasive Therapies and
Nuclear Medicine

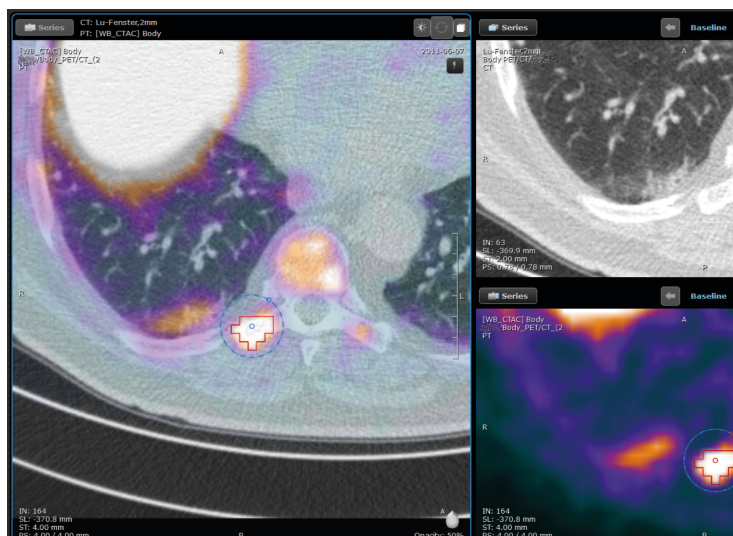
"Nowadays, in oncological therapy assessments, radiological reads are increasingly expected to be based on standardized criteria, such as e.g. RECIST. Here, many details have to be taken into account - a manual evaluation of the measurements with traditional methods such as paper, pencil and calculator is not a solution that can be used efficiently and reliably," explains Prof. Dr. Philippe Pereira. Many rules have to be heeded in these evaluations, for example how measurements are to be carried out and which lesions are suitable and representative for the assessment of the therapy.

A software solution for structured reading knows both the clinical background of the patient as well as the context of the radiological read. Concrete support enables the complete and compliant application of guidelines. The automation of routine procedures, such as the retrieval of tumors in imaging data or the preparation of the report, simplifies and accelerates the work in clinical routine.

The SLK Clinics are therefore currently integrating mint Lesion™ into their daily oncological routine: As a thin-client installation, mint Lesion™ is available at all workstations where reads are being conducted. It is possible to switch from Agfa Orbis™ directly to mint Lesion™ with one mouse click. In mint Lesion™, lesions are recorded quickly and assessed over time. The results are inserted into the brief report in the form of an automatically generated text module and are available as a detailed report in the medical file.

"We can thus demonstrate the results in a meaningful way in the daily radiological review, but also give the involved oncologists on the ward or even in the outpatient hospital direct access to comprehensible, structured reports," says Prof. Pereira. A true-to-scale depiction of the lesions in an overview of the entire course since the start of therapy provides a summary of all findings and their changes under the influence of therapy.

Dr. Markus Schammann is convinced that the high flexibility of mint Lesion™ concerning the handling of guidelines and images over the course of time is crucial for a successful, efficient cooperation with oncologists: "In one particular case, our referring physician asked – almost meekly – whether we could somehow make it possible to retrospectively define the external preliminary investigation, which had unexpectedly arrived,



mint Lesion™ knows all of the "rules of the game" for common guidelines and leads the user quickly and easily through oncological reports.



Dr. Markus Schammann
Clinic for Diagnostic Radiology,
Minimally Invasive Therapies and
Nuclear Medicine

as baseline. Of course, he could not possibly know how easy this can be managed with mint Lesion™: The previously registered lesions could quickly be identified and measured in the preliminary investigation. An overview of the external data set did not reveal any further relevant lesions and a new report with context regarding the entire therapy progress was created with just one keystroke".

Mint Medical and the SLK Clinics Heilbronn have been cooperating closely for several years to jointly develop mint Lesion™ further. One project is the development of a structured reporting system for the staging of tumor diseases. Dr. Schammann describes the cooperation as follows: "Here, too, do we have the opportunity to incorporate our ideas and feedback directly into the software development - and thereby make radiological reporting easier and more efficient in the future".