

WHERE DRIVE MEETS PURPOSE

Student Opportunities at Mint Medical

Read more 



MINT MEDICAL

Mint Medical is a MedTech company in the field of medical imaging and data analysis. Our mission is to improve the efficiency and accuracy of medical diagnostics by **developing cutting-edge software solutions that support the work of radiologists and other healthcare professionals**. Our solutions enable the structured acquisition, processing, and presentation of complex medical data—ensuring it is AI-ready, clinically relevant, and easy to interpret and analyze.

WRITING YOUR THESIS

WHY MINT MEDICAL?

Innovative MedTech projects with a purpose

Shape the future of radiology with us. Work on pioneering solutions that are transforming radiology and oncological research in Europe and beyond.

Team work at eye level

Collaborate in an agile, inclusive team where everyone's voice matters. Ideal for your personal and professional growth.

Sustainable learning

Master core programming skills and gain hands-on knowledge of open healthcare standards like FHIR and DICOM, which are shaping the future of MedTech.



STUDENT RESPONSIBILITIES

If you are a student and write your student thesis at Mint Medical, your participation in the process is not only given by working on the thesis. During the recruiting and preparation process or your employment at Mint Medical, you also have responsibilities. The following key points summarize your responsibilities during all parts of the process:

RECRUITING AND PREPARATION

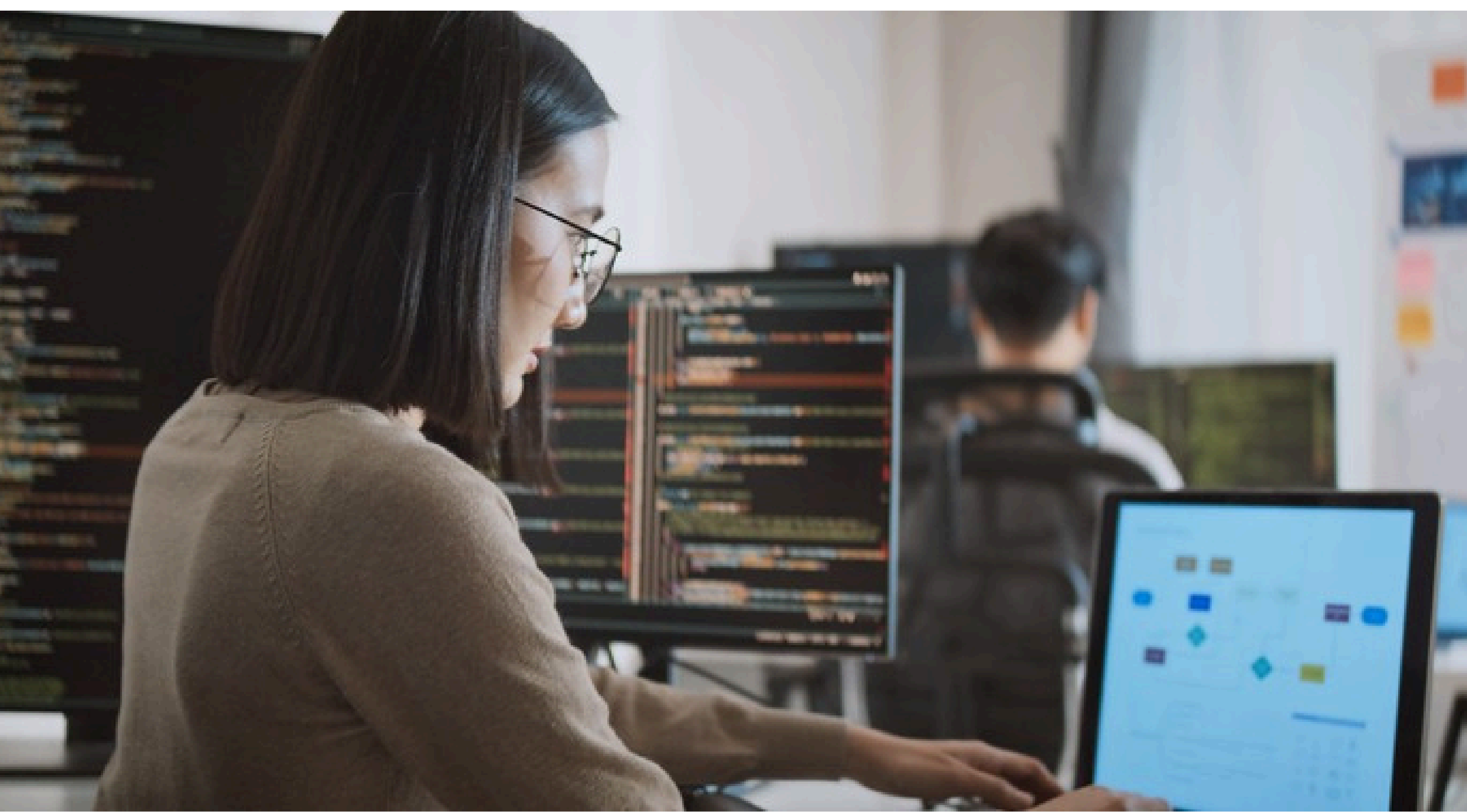
- 1** Apply: Send us your application, including a short description of your academic background, previous work, and what you're looking for in a thesis opportunity.
- 2** If your profile matches, we'll invite you to a meeting. It's a chance for you to learn more about us and for us to learn more about you.
- 3** Next, we'll schedule a planning meeting to explore your options at Mint Medical and find a thesis topic that aligns with your interests and our expertise. You drive the discussion on the topic of your thesis together with Mint Medical and your university.
- 4** Once everything is agreed upon, we'll send you a contract so you can officially start your thesis journey with us. You ensure that your university supervisor will sign the supervisor agreement which regulates Data Protection and Property Rights.

WORKING AT MINT MEDICAL

- 1** Sign your Thesis Contract with Mint Medical. This includes an NDA as well as the agreement that all IP of this work belongs to Mint Medical and you commit yourself to the Student Thesis Process at Mint Medical.
- 2** Participate in the IP-Check Meeting at the beginning of your employment.
- 3** During the first quarter of your thesis (at least two months before end or before 2nd IP meeting): prepare an exposé about the status of your work, this text should contain a paragraph about "Schutzrechte" (this should be sent to IP Department).
- 4** If necessary: set up and join a second IP-Check Meeting at 2/3 of your thesis (~30min) and participate in IP Filing if applicable.

FINAL STEP

In case of IP relevance: Use NDAs for your final presentation.



STUDENTS



Leila

At Mint since: Sep '21

Thesis:

“Konzeption und Implementierung von Security-Testing-Methoden nach IEC 81001-5 1 am Beispiel von mint Lesion”

What I like about Mint Medical:

Everyone is welcoming, helpful and supportive; you can build friendships quickly. The overall atmosphere is very relaxed, and any issue you face is met with understanding. I also really enjoy the coffee and lunch breaks we have together. There's a student room where more experienced students (like me 😊) hang out, so you're welcomed immediately and given a lot of guidance.



Jess

At Mint since: Mar '22

Thesis:

“Konzeption und Entwicklung eines webbasierten Editors für klinische Fragebögen”

What I like about Mint Medical:

We always cook together during lunch break.

FORMER STUDENTS



Robert

At Mint since: May '24

Thesis:

“Building a custom prometheus metrics exporter using event sourcing”

What I like about Mint Medical:

Relaxed atmosphere, nice colleagues, flexible work hours.

Now a Software Engineer at Mint Medical.



Marie

At Mint since: Mar '21

Thesis BA:

“Automatische Projektionen von Prostataläsionen auf schematische Prostatakarten”

Thesis MA:

“Development and quality assessment of a semi-automatic workflow for the evaluation of DCE-MRI images”

What I like about Mint Medical:

The direct collaboration with colleagues and the resulting exchange of knowledge. I really appreciated the opportunity to contribute to a variety of topics as a member of the team.

Now a Software Engineer at Mint Medical.



HOW TO APPLY

- 1 Go to our career page: <https://mint-medical.com/the-company/career>
- 2 Select the position you'd like to apply for or click "Join Talent Pool" for a speculative application.
- 3 Submit your application documents in English.
- 4 Brainlab HR will check and forward your application to Mint Medical. We'll then get back to you as soon as possible. Thank you for your patience!

Career page

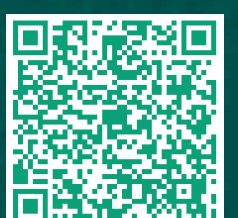


mintmedical

Visit our website
mint-medical.com



Stay up-to-date
linkedin.com/company/mint-medical



Stay up-to-date
instagram.com/mintmedical

